

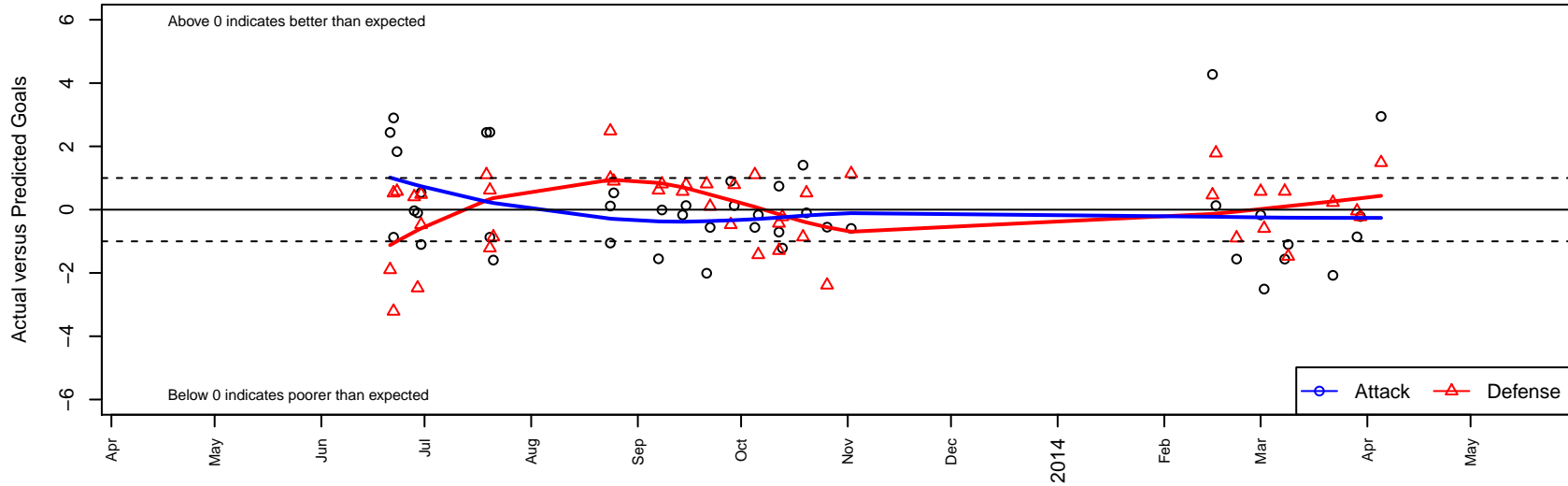
# Washington Timbers Red B02

Washington Timbers  
 Vancouver, WA  
 B02 total strength=843  
 attack=1.24 defense=1.09  
 fall league = OPL National Premier League U11  
 alt names used:  
 Washington Timbers FC B02 Red  
 WTFC B02 Red  
 Washington Timbers B02 Red  
 WA Timbers B02 Red  
 WASHINGTON TIMBERS FC B02 RED (WA)

Venues played:  
 Cascadia Challenge Gold U11  
 Clash At the Border 11v11 U11  
 Beaverton Cup BU11 NWCL  
 NW Champions League U11  
 OPL National Premier League U11  
 Spr OYS PTT B02 Timbers Premier  
 Challenge Cup B02 Division 1 – Challenge 1



**Washington Timbers Red B02**  
 Dots are actual minus expected GF (blue circles) and GA (red triangles).  
 Blue line is smoothed change in attack strength. Red is smoothed change in defense strength.



|      | date       | home                                  |   | away                          |    | venue                                      | pred.home | pred.awa |
|------|------------|---------------------------------------|---|-------------------------------|----|--|-----------|----------|
| 5588 | 2014-04-05 | Washington Timbers Red B02            | 4 | Crossfire Premier A B02       | 1  | Challenge Cup B02 Division 1 – Challenge 1 | 1.05      | 2.49     |
| 5514 | 2014-03-30 | WPFC Black B02                        | 2 | Washington Timbers Red B02    | 1  | Challenge Cup B02 Division 1 – Challenge 1 | 1.78      | 1.22     |
| 5415 | 2014-03-29 | FC Alliance A B02                     | 1 | Washington Timbers Red B02    | 1  | Challenge Cup B02 Division 1 – Challenge 1 | 0.96      | 1.86     |
| 5132 | 2014-03-22 | Washington Timbers Red B02            | 0 | 3 Rivers Black B02            | 1  | Challenge Cup B02 Division 1 – Challenge 1 | 2.08      | 1.23     |
| 4195 | 2014-03-09 | Westside Timbers Copa B02             | 3 | Washington Timbers Red B02    | 0  | Spr OYS PTT B02 Timbers Premier            | 1.53      | 1.10     |
| 3854 | 2014-03-08 | Washington Timbers Red B02            | 5 | River Plate SC Blue River B02 | 0  | Spr OYS PTT B02 Timbers Premier            | 6.56      | 0.58     |
| 3657 | 2014-03-02 | Capital FC Timbers Red –was Black B02 | 2 | Washington Timbers Red B02    | 0  | Spr OYS PTT B02 Timbers Premier            | 1.41      | 2.51     |
| 3397 | 2014-03-01 | Washington Timbers Red B02            | 2 | Eastside Timbers Black B02    | 0  | Spr OYS PTT B02 Timbers Premier            | 2.17      | 0.58     |
| 2903 | 2014-02-22 | Washington Timbers Red B02            | 1 | NEU Barca White B02           | 2  | Spr OYS PTT B02 Timbers Premier            | 2.56      | 1.10     |
| 2655 | 2014-02-16 | Eastside Timbers Red B02              | 0 | Washington Timbers Red B02    | 1  | Spr OYS PTT B02 Timbers Premier            | 1.79      | 0.87     |
| 2463 | 2014-02-15 | Academia Leon B02                     | 0 | Washington Timbers Red B02    | 14 | Spr OYS PTT B02 Timbers Premier            | 0.46      | 9.73     |
| 6590 | 2013-11-02 | Washington Timbers Red B02            | 3 | WAFC Real Madrid B02          | 0  | OPL National Premier League U11            | 3.59      | 1.14     |
| 5688 | 2013-10-26 | FC Portland Navy B02                  | 3 | Washington Timbers Red B02    | 2  | OPL National Premier League U11            | 0.62      | 2.55     |
| 5237 | 2013-10-20 | Westside Timbers Copa B02             | 1 | Washington Timbers Red B02    | 1  | OPL National Premier League U11            | 1.53      | 1.10     |
| 4752 | 2013-10-19 | WAFC Real Madrid B02                  | 2 | Washington Timbers Red B02    | 5  | OPL National Premier League U11            | 1.14      | 3.59     |
| 4257 | 2013-10-13 | WPFC Black B02                        | 2 | Washington Timbers Red B02    | 0  | NW Champions League U11                    | 1.78      | 1.22     |
| 3699 | 2013-10-12 | Eastside FC Red B02                   | 2 | Washington Timbers Red B02    | 1  | NW Champions League U11                    | 1.57      | 1.71     |
| 3705 | 2013-10-12 | Crossfire Premier B B02               | 2 | Washington Timbers Red B02    | 3  | NW Champions League U11                    | 0.71      | 2.26     |
| 3198 | 2013-10-06 | Eastside Timbers Black B02            | 2 | Washington Timbers Red B02    | 2  | OPL National Premier League U11            | 0.58      | 2.17     |
| 2660 | 2013-10-05 | Washington Timbers Red B02            | 2 | NEU Barca White B02           | 0  | OPL National Premier League U11            | 2.56      | 1.10     |
| 2245 | 2013-09-29 | Washington Timbers Red B02            | 1 | Eastside Timbers Red B02      | 1  | OPL National Premier League U11            | 0.87      | 1.79     |
| 1758 | 2013-09-28 | Washington Timbers Red B02            | 2 | Westside Timbers Copa B02     | 2  | OPL National Premier League U11            | 1.10      | 1.53     |
| 1317 | 2013-09-22 | NEU Barca White B02                   | 1 | Washington Timbers Red B02    | 2  | OPL National Premier League U11            | 1.10      | 2.56     |
| 0790 | 2013-09-21 | Washington Timbers Red B02            | 1 | SESC Strikers B02             | 0  | OPL National Premier League U11            | 3.01      | 0.81     |
| 0357 | 2013-09-15 | Eastside Timbers Red B02              | 1 | Washington Timbers Red B02    | 1  | OPL National Premier League U11            | 1.79      | 0.87     |
| 1812 | 2013-09-14 | Washington Timbers Red B02            | 2 | Eastside Timbers Black B02    | 0  | OPL National Premier League U11            | 2.17      | 0.58     |
| 1395 | 2013-09-08 | SESC Strikers B02                     | 0 | Washington Timbers Red B02    | 3  | OPL National Premier League U11            | 0.81      | 3.01     |
| 1872 | 2013-09-07 | Washington Timbers Red B02            | 1 | FC Portland Navy B02          | 0  | OPL National Premier League U11            | 2.55      | 0.62     |

|      | <b>date</b> | <b>home</b>                |   | <b>away</b>                  |   | <b>venue</b>                  | <b>pred.home</b> | <b>pred.away</b> |
|------|-------------|----------------------------|---|------------------------------|---|-------------------------------|------------------|------------------|
| 8302 | 2013-08-25  | Washington Timbers Red B02 | 4 | MVP Rapids Navy B02          | 0 | NW Champions League U11       | 3.47             | 0.90             |
| 7865 | 2013-08-24  | Washington Timbers Red B02 | 1 | Seattle United Copa B02      | 1 | NW Champions League U11       | 0.88             | 1.99             |
| 7870 | 2013-08-24  | Washington Timbers Red B02 | 0 | Crossfire Premier A B02      | 0 | NW Champions League U11       | 1.05             | 2.49             |
| 4117 | 2013-07-21  | Washington Timbers Red B02 | 2 | W AFC Real Madrid B02        | 2 | Beaverton Cup BU11 NWCL       | 3.59             | 1.14             |
| 3625 | 2013-07-20  | FC Portland Navy B02       | 0 | Washington Timbers Red B02   | 5 | Beaverton Cup BU11 NWCL       | 0.62             | 2.55             |
| 3641 | 2013-07-20  | Washington Timbers Red B02 | 0 | Eastside Timbers Red B02     | 3 | Beaverton Cup BU11 NWCL       | 0.87             | 1.79             |
| 3399 | 2013-07-19  | Washington Timbers Red B02 | 5 | NEU Barca White B02          | 0 | Beaverton Cup BU11 NWCL       | 2.56             | 1.10             |
| 2410 | 2013-06-30  | Washington Timbers Red B02 | 5 | Washington Timbers Green B02 | 0 | Clash At the Border 11v11 U11 | 4.46             | 0.48             |
| 2412 | 2013-06-30  | Westside Timbers Copa B02  | 2 | Washington Timbers Red B02   | 0 | Clash At the Border 11v11 U11 | 1.53             | 1.10             |
| 2221 | 2013-06-29  | Washington Timbers Red B02 | 1 | Westside Timbers Copa B02    | 4 | Clash At the Border 11v11 U11 | 1.10             | 1.53             |
| 2100 | 2013-06-28  | PCU Red B02                | 0 | Washington Timbers Red B02   | 5 | Clash At the Border 11v11 U11 | 0.41             | 5.03             |
| 1948 | 2013-06-23  | Eastside Timbers Black B02 | 0 | Washington Timbers Red B02   | 4 | Cascadia Challenge Gold U11   | 0.58             | 2.17             |
| 1754 | 2013-06-22  | Washington Timbers Red B02 | 4 | Westside Timbers Copa B02    | 1 | Cascadia Challenge Gold U11   | 1.10             | 1.53             |
| 1757 | 2013-06-22  | Eastside Timbers Red B02   | 5 | Washington Timbers Red B02   | 0 | Cascadia Challenge Gold U11   | 1.79             | 0.87             |
| 1636 | 2013-06-21  | NEU Barca White B02        | 3 | Washington Timbers Red B02   | 5 | Cascadia Challenge Gold U11   | 1.10             | 2.56             |